



NO MATTER WHERE OR WHAT YOU RACE, WE GOT YOU COVERED

TRAILER & SHOP ACCESSORIES

LIFTS & STANDS



hrpracing.com

HEPFNER RACING PRODUCTS

It All Started with the Drive to Build a Better Sprint Car Wing

HEPFNER RACING PRODUCTS

2133 Constitution Ave.
Hartford, WI 53027

HOURS

8:00 am - 5:00 pm CST
Monday - Friday

CONTACT US VIA EMAIL

hrpsales@ghilaser.com

SHOP & ORDER ONLINE

hrpracing.com

ORDER BY PHONE

(262) 457-5015

PAYMENT OPTIONS

We Accept Visa, MasterCard, Discover & AmEx

SHIPPING

Our Facility Ships UPS Daily. Customer Pickup is also Available by Request



FAMILY OWNED & OPERATED FACILITY, HEPFNER
RACING PRODUCTS IS PROUDLY **MADE IN THE USA**

TABLE OF CONTENTS

TRAILER & SHOP ACCESSORIES FOR ALL TYPES OF RACING

Charging Station & Drill/Impact Holders	3
Toolbox Drawer Trays & Organization	4
Tool Holders & Racks	5 - 6
Broom, Handle, Glove, & Wet Wipe Holders	7
Towel Racks	8
Work Station & Oil Bottle/Aerosol Can Trays	9

Spray Can & Bottle Holders; Shop Cart	10
Utility Jugs, Racks, & Accessories	11
Fuel Funnels, Racks, Hooks, & Accessories	12
Tire Gauge, Nitro Bottle, & Air Tank Holders	13
Air Hose/Electrical Cord Reels & Mounts	14
Trailer & Shop Cabinets	15 - 16

SPRINT CAR, MIDGET, MICRO, MODIFIED, & STOCK CAR SPECIALTY EQUIPMENT

Sprint Car Assembly/Tear Down Cart	17
Wall Mount Axle Racks	18
Driveline, Bumper, Radiator, Fuel, & Cover Racks	19
Torsion Bar, Steering Gear, & Fuel Tank Racks	20
Gear Pans, Panels, Cases, & Shelves	21
Hero Card, Nose Wing, & Torsion Bar Trays	22
Impact Socket & Wheel Wrench Rack; Bead Breakers	23
Wheel Balancer & Tire Racks	24

Squaring Blocks & Arms; Moose Blocks & Holder	25
Tire Groovers, Grinding Disk, & Tire Sippers	26
Cabinet/Wall Mount Radius Rod Racks	27
Cabinet/Wall Mount Shock Racks	28
Engine Accessories	29
Engine Stand, Rear End Wrench, & Car Carts	30
Top Wing Wall Trays & Roof Mounts	31
Wicker Bill & Nose Wing Racks; Straps/Bungees	32

STREETER SUPER STANDS: KART RACING, QUARTER MIDGET, WINGED OUTLAWS

Streeter Super Stands & Big Foot Models	33 - 34
Streeter Super Lift & Accessories/Replacements	35 - 36
Streeter Stackers & Inserts	37

Uprights, Regular Kart Stand, & Stacker Table Top	38
Engine, Tire, & Axle Racks	39
Wheels, Bead Breaker, & Steering Wheels	40

HRP & STREETER MERCHANDISE

Apparel, Hats, Decals, & Hangers	41
----------------------------------	----

HRP MULE CONVERSIONS

HRP Kawasaki Mule Conversions	42
-------------------------------	----

TRAILER & SHOP NECESSITIES

Trailer & Shop Necessities	43 - 45
----------------------------	---------

MOUNTING INFORMATION

Mounting Information	46
----------------------	----

WALL MOUNT CORDLESS CHARGING STATION

HRP Charging Station Holds Drills, Impacts, Flashlights, Charging/Battery Packs, & Other Similar Hand-Held Tools

- Cords Pass Through Back Access Hole for Clean & Easy Plug in

● **HRP6126-BLK** \$55.00



CORDLESS DRILL & IMPACT HOLDER

Set In Style

- Fits Both Drills & Impacts

Part No.	Price
○ HRP6359-WHT	\$22.15
● HRP6359-BLK	\$22.15



CORDLESS DRILL HOLDER

Slide In Style

- Mounts Horizontally or Vertically

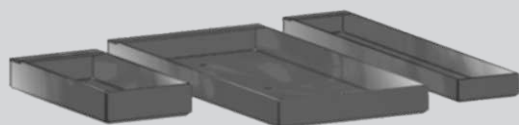
Part No.	Description	Price
○ HRP6369-1-WHT	Standard Mount (Fits 2.57" I.D.)	\$32.90
○ HRP6369-WHT	Adjustable Mount (Fits 2.12" - 2.92" I.D.)	\$32.90



TOOL & PART TRAYS

Bare Aluminum

Length	2.0" Wide	2.5" Wide	3.0" Wide	3.5" Wide	4.0" Wide	6.0" Wide	Price
4.0"	● HRP6152A	● HRP6153A	● HRP6154A	● HRP6155A	● HRP6156A	-	\$6.40
6.0"	● HRP6152B	● HRP6153B	● HRP6154B	● HRP6155B	● HRP6156B	● HRP6157B	\$7.10
8.0"	● HRP6152C	● HRP6153C	● HRP6154C	● HRP6155C	● HRP6156C	-	\$7.70
10.0"	● HRP6152D	● HRP6153D	● HRP6154D	● HRP6155D	● HRP6156D	-	\$8.30
12.0"	● HRP6152E	● HRP6153E	● HRP6154E	● HRP6155E	● HRP6156E	-	\$8.95



WRENCH RACKS

Bare Aluminum

Part No.	Spots	Fits	Price
Combination Wrenches			
● HRP6122-F	8	5/16" - 3/4"	\$24.00
● HRP6122-B	4	5/16" - 3/4"	\$24.00
Open End/Ratchet Box End Wrenches			
● HRP6120-F	13	1/4" - 1"	\$24.00
● HRP6121-B	9	1/4" - 3/4"	\$24.00
● HRP6121-F	9	1/4" - 3/4"	\$24.00

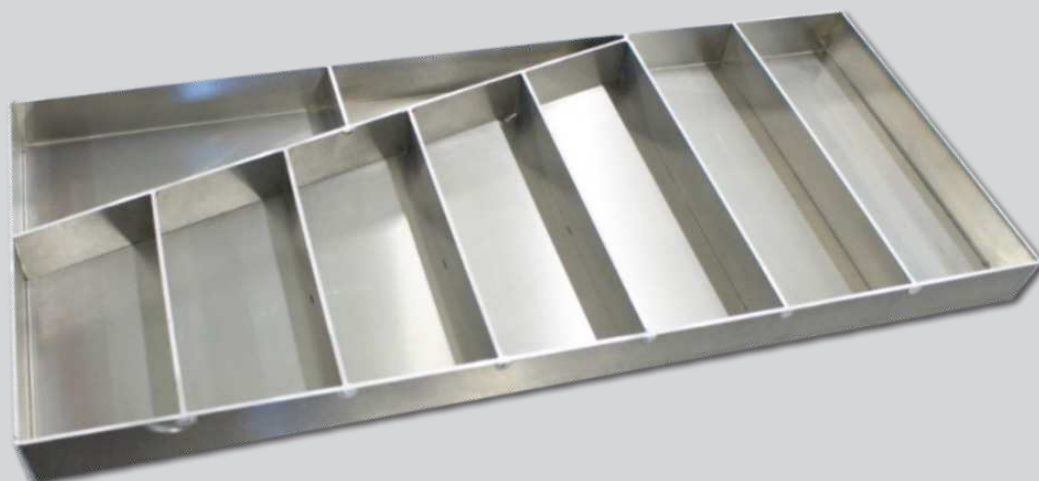


FULL WRENCH TRAY

25.00" x 11.00" x 1.25"

- 9 Compartments
- Bare Aluminum

● HRP6115-7 \$286.00



AIR HOSE HANGER

With Storage Cubby

10.0" Long x 5.7" Wide x 6.0" Tall
- Aluminum

Part No.	Price
○ HRP6281-WHT	\$49.10
● HRP6281-BLK	\$55.75



AIR HOSE HANGER

Without Storage Cubby

10.0" Long x 5.7" Wide x 6.0" Tall
- Aluminum

Part No.	Price
○ HRP6280-WHT	\$40.85
● HRP6280-BLK	\$43.70



ELECTRICAL CORD RACK

5.5" Long x 4.2" Wide x 5.0" Tall
- Steel

Part No.	Price
○ HRP6275-WHT	\$30.80
● HRP6275-BLK	\$32.35



DUCT TAPE HOLDER

Aluminum

Part No.	Price
○ HRP6390-WHT	\$26.70
● HRP6390-BLK	\$26.70



FLASHLIGHT HOLDER

Aluminum

Part No.	Price
○ HRP6299-WHT	\$40.85
● HRP6299-BLK	\$42.60



TAPE MEASURE RACKS

Mounts to Toolbox Drawer

- Bare Aluminum

Part No.	Description	Price
● HRP6161A	Medium (3.360")	\$7.70
● HRP6161B	Large (4.360")	\$7.70



PACKING TAPE HOLDER

Aluminum

○ HRP6165-WHT \$22.50



ZIP TIE HOLDER

12.9" Long x 14.2" Tall

- 5 Spot for a Large Assortment of Ties
- Aluminum

Part No.	Price
○ HRP6085-WHT	\$70.95
● HRP6085-BLK	\$70.95



GREASE GUN HOLDER

Aluminum

○ HRP6298 \$21.05



WALL MOUNT GRINDER RACK

Aluminum

Part No.	Size	Price
○ HRP6068-A-WHT	9"	\$19.90
○ HRP6068-B-WHT	7"	\$18.75
○ HRP6068-C-WHT	5"	\$17.65



STANDARD SHRINK WRAP HOLDER

11"

- Aluminum

○ HRP6065A-WHT \$42.00



MINI SHRINK WRAP HOLDER

Aluminum

○ HRP6065B-WHT \$17.65



RATCHET STRAP HANGERS

Keep your Ratchet Straps & Tie-Downs Organized

Finish	8" Wide	18" Wide
White	○ HRP6007-WHT \$35.75	○ HRP6007-BLK \$41.45
Black	● HRP6005-WHT \$55.00	● HRP6005-BLK \$46.50



RATCHET STRAP RACK

Large Handle Style
- 11" x 11"

○ HRP6006-WHT \$39.15



FLOOR JACK WALL MOUNT CRADLE

Accepts up to 11" Wide Jack Base
- 16" Long x 27" Tall

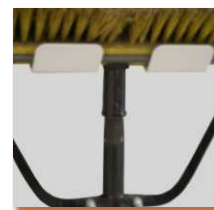
Part No.	Price
○ HRP6289-WHT	\$130.45
● HRP6289-BLK	\$141.75



1 BROOM, HANDLE, GLOVE, & WIPE HOLDERS

BROOM HOLDERS

Finish	Large Push Broom Holder	Small Broom Holder - Flat	Small Broom Holder - Angled
White	○ HRP6392-WHT \$14.25	○ HRP6393-WHT \$12.50	○ HRP6389-WHT \$16.70
Black	● HRP6392-BLK \$17.05	● HRP6393-BLK \$16.15	● -



Large Push
Broom Holder



Small Broom
Holder - Flat



Small Broom
Holder - Angled

SHOVEL/HANDLE HOLDER

Keep your Hand-Held Items Against the Wall & Out of the Way!

- See WABAM Wipes on Page #45
- Aluminum

○ HRP6167-WHT \$18.50



HEAVY DUTY UTILITY HOOK

Keep your Hand-Held Items Against the Wall & Out of the Way!

- 3.75" Long x 4.32" Tall
- Stainless Steel

● HRP6394 \$11.95



DISPOSABLE GLOVE HOLDER

See Disposable Gloves on Page #45

- Aluminum

○ HRP6185-WHT \$39.15



WET WIPE HOLDER

Keep your Hands & Space Clean!

- See Wet Wipes on Page #45
- Aluminum

○ HRP6167-WHT \$18.50

NEW PRODUCT



STANDARD SIZE TOWEL RACKS

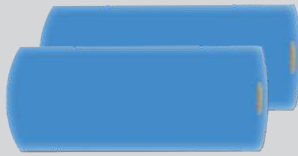
Fits Standard Size Roll Towels

Part No.	Description	Price
○ HRP6430-WHT	Roll Towel Rack	\$48.25
● HRP6430-BLK	Roll Towel Rack	\$50.50
○ HRP6470-WHT	Roll Towel & Aerosol Storage Rack	\$112.30

SHOP ROLL TOWELS

Assorted Sheet Count
- Sold Each

HRP6191 \$4.55



HRP6470-WHT



HRP6430-WHT

JUMBO ROLL TOWEL RACK

Fits Jumbo Size Roll Towels up to 13" Wide x 16" Deep

Part No.	Price
○ HRP6431-WHT	\$82.25
● HRP6431-BLK	\$89.25



JUMBO ROLL TOWELS

Brand & Manufacture May Vary
- Aluminum

HRP6196 \$50.50



TOWEL BOX RACK

Fits Towel Boxes

Part No.	Price
○ HRP6193-WHT	\$47.10
● HRP6193-BLK	\$49.70



SHOP TOWEL BOX

200 Count
- Brand & Manufacture May Vary

HRP6192 \$15.99



WALL MOUNT WORKSTATION

23" x 23"

- Built In Roll Towel Dispenser
- An Inside Shelf for Optimum Storage
- Door Locks in a Closed Position for Travel
- A Sturdy, Easy to Clean Surface

Part No.	Price
○ HRP6410-WHT	\$275.00
● HRP6410-BLK	\$265.00



WALL MOUNT LUBRICANT BOTTLE & AEROSOL TRAYS

Part No.	Size	Dimensions	Price
○ HRP6473-WHT	Large	31.88" x 22.75" x 8.62"	\$275.00
○ HRP6471-WHT	Medium	17.94" x 17.75" x 5.12"	\$118.55
○ HRP6472-WHT	Small	17.94" x 17.75" x 5.12"	\$106.10



OIL BOTTLE & AEROSOL CAN TRAYS

Part No.	White Finish	Black Finish
16" Long		
2.75" Wide, Alum.	○ HRP6302-WHT \$36.45	● HRP6302-BLK \$37.85
3.25" Wide, Alum.	○ HRP6300-WHT \$34.05	● HRP6300-BLK \$37.85
4.50" Wide, Alum.	○ HRP6301-WHT \$40.30	● HRP6301-BLK \$40.50
4.50" Wide, Steel	○ HRP6301S-WHT \$39.70	-
32" Long		
2.75" Wide, Alum.	○ HRP6304-WHT \$43.70	● HRP6304-BLK \$47.00
3.25" Wide, Alum.	○ HRP6305-WHT \$45.40	● HRP6305-BLK \$48.65
4.50" Wide, Alum.	○ HRP6306-WHT \$48.80	● HRP6306-BLK \$51.85



32" Long



16" Long

SPRAY CAN & BOTTLE HOLDERS

Aluminum

Part No.	Description	Price
○ HRP6092-1-3750-WHT	Spray Bottle, 1 Spot	\$21.05
○ HRP6092-1-WHT	Spray Can, 1 Spot	\$21.05
○ HRP6092-4-WHT	Spray Can, 4 Spot	\$34.65
○ HRP6092-6-WHT	Spray Can, 6 Spot	\$41.45



HEAVY DUTY SHOP CART

Perfect for your Shop!

- Thick, Heavy Duty Metal for Durability
- Powder Coated Red
- Breaks Down for Shipping, (Assembly Required)

Main Standard Cart Includes:

- 2 Lower Shelves & Necessary Corner Posts
- Rigid & Swivel Casters for Easy Mobility
- Handle for Pushing & Pulling

Add-On Upper Level Includes:

- 1 Upper Shelf
- 4 Add-On Corner Posts

Part No.	Description	Price
● HRP6030	Main Standard Cart	\$540.00
● HRP6030-UPPER	Add-On Upper Level	\$265.00



NEW PRODUCT



Main Standard Cart

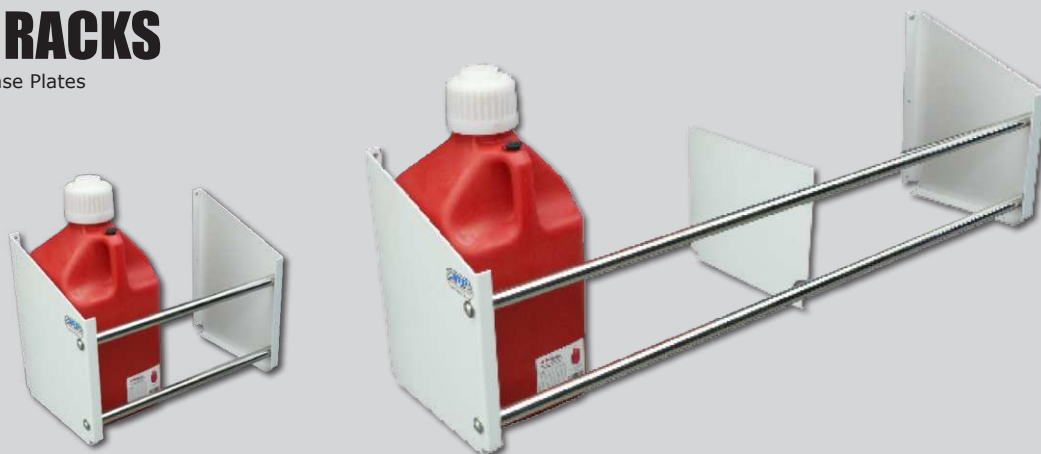


With Add-On Upper Level

FLOOR MOUNT JUG RACKS

- Powder Coated Aluminum End, Center, & Base Plates
- Stainless Steel Rods
- Holds (4, 6, or 8) 5 Gallon Sized Jugs

Part No.	Spots	Price
○ HRP6360-WHT	2	\$154.85
○ HRP6361-WHT	4	\$176.40
○ HRP6362-WHT	6	\$201.90



TWO LEVEL JUG RACKS

- Powder Coated Aluminum End, Center, & Base Plates
- Stainless Steel Rods
- Holds (4, 6, or 8) 5 Gallon Sized Jugs

Part No.	Spots	Price
○ HRP6359-4-WHT	4	\$300.55
● HRP6359-4-BLK	4	\$314.25
○ HRP6359-6-WHT	6	\$340.20
● HRP6359-6-BLK	6	\$355.05
○ HRP6359-8-WHT	8	\$374.25
● HRP6359-8-BLK	8	\$390.30



2.5 GALLON JUG RACK

Wall Mount

- Holds (2) 2.5 Gallon Jugs
- Aluminum

○ **HRP6358** \$150.30



UTILITY JUGS

Manufacture or Style May Vary
- Market Price

Part No.	Size
○ HRP6364	5 Gallon
● HRP6364-BLK	5 Gallon
● HRP6364-RED	5 Gallon
○ HRP6363	2.5 Gallon



FUEL FUNNEL RACKS

Part No.	Description	Price
○ HRP6260-WHT	Triangle Rack	\$60.15
● HRP6260-BLK	Triangle Rack	\$69.20
○ HRP6261-WHT	D-Shaped Rack	\$60.15
● HRP6261-BLK	D-Shaped Rack	\$70.35



FUNNEL HOOK

Fits Triangle Sized Funnels

Part No.	Price
○ HRP6262-WHT	\$24.45
● HRP6262-BLK	\$24.45
● HRP6262	\$19.90



FUEL FUNNELS

Manufacture or Style May Vary
- Market Price

Part No.	Style
BEH-366-55001406	Triangle
SCR6110R	D-Shape



UTILITY JUG ACCESSORIES

HOSE BENDER

WPS-30-1200 \$5.25



SCREW IN HOSE

Fits 2.5 or 5 Gallon Jug

HRP6365 \$9.10



FUEL FUNNEL FILTER

Use with **BEH-366-55001406**

BEH-366-5000001 \$21.95

LONGACRE TIRE GAUGES

Shop the Entire Section Online
- Prices Subject to Change



Part No.	Description	PSI	Length	Price
52-53053	3.5" Digital	0-100 psi	17" Long	\$545.00
52-53010	2.5" Digital	0-25 psi	17" Long	\$178.00
52-53006	2.0" Digital	0-60 psi	14" Long	\$60.00



TIRE GAUGE HOLDERS

Aluminum

Part No.	Style	Fits	I.D.	Price
<input type="radio"/> HRP6383-WHT	Large	3.5" Gauges	4.00"	\$26.10
<input type="radio"/> HRP6380-WHT	Small	2.5" Gauges	3.50"	\$25.55
<input type="radio"/> HRP6378-WHT	Mini	2.0" Gauges	2.75"	\$25.55
<input type="radio"/> HRP6382-WHT	Square	Intercomp Gauges	-	\$25.00



Large/Small/Mini Style



Square Style

BOLT ON STYLE

NITRO BOTTLE HOLDER

Sold as a Set (2)

☐ **HRP6060** \$93.60



SET IN STYLE - 7"

NITRO BOTTLE HOLDER

Part No.	Price
<input type="radio"/> HRP6059-WHT	\$68.05
<input checked="" type="radio"/> HRP6059-BLK	\$85.05



AIR TANK RACK

20.5" Wide x 9.5" Deep

- Rubber Protected Saddle Edges
- Fits Both **HRP6373** & **STR-2800-510**

Part No.	Description	Price
<input checked="" type="radio"/> HRP6370-1	Air Tank Rack	\$93.60
<input checked="" type="radio"/> HRP6373	5 Gallon Aluminum Air Tank	\$124.75
<input checked="" type="radio"/> STR-2800-510	5 Gallon Steel Air Tank	\$64.20



AIR HOSE REELS

Call or Visit hrpracing.com for Pricing

Part No.	Description	Length	I.D.
HRP6287	Composite Hose Reel	50' Long	1/4
HRP6285	Economy Hose Reel	50' Long	3/8
HRP6286	Air Hose & Reel	35' Long	3/8



HRP6287



HRP6285



HRP6286

AIR HOSE REEL MOUNTING BRACKETS

Aluminum

Part No.	Style	Price
<input type="radio"/> HRP6293	Universal Bracket	\$50.20
<input type="radio"/> HRP6293-1	Wall Mount Bracket	\$48.25



HRP6293



HRP6293-1

HOSE REEL COVER

17.5" x 20.0" x 9.0"

☐ HRP6296 \$119.10



ELECTRICAL CORD REEL

With 3 Outlet Strip

HRP6284 \$73.75



ELECTRICAL CORD REEL MOUNTING BRACKETS

Aluminum

Part No.	Style	Price
<input type="radio"/> HRP6290	Hanging Style Narrow	\$21.05
<input type="radio"/> HRP6291	Hanging Style Wide	\$26.15



HRP6290



HRP6291

OVERHEAD CABINETS

15.411" Tall x 13.500" Wide

- 1" Flip Up Door

Part No.	Length	Price
Single Door		
○ HRP6509-24-WHT	24"	\$225.70
○ HRP6509-32-WHT	32"	\$232.50
● HRP6509-32-BLK	32"	\$255.00
○ HRP6509-36-WHT	36"	\$238.15
Double Door		
○ HRP6509-48-WHT	48"	\$339.10
○ HRP6509-60-WHT	60"	\$361.25



Single Door Cabinet

Double Door Cabinet

JUG STORAGE WALL CABINET

66" x 54" x 12"

- .090" Aluminum

- Stores up to 12 Fuel Jugs

- See Fuel Jugs on Page #11

Part No.	Price
○ HRP6510-WHT	\$1,530.90
● HRP6510-BLK	\$1,644.30



REAR END/AXLE RACK WALL CABINET

72" x 70"

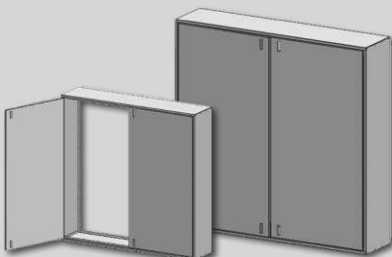
- Sprint Car & Midgets

- Dimensions Allow Rear Axle Assembly & Front Axle Storage

- .090" Aluminum

- Use with HRP Axle Racks: See on Page #23

○ HRP6511-WHT \$1,417.50



WALL CABINETS

- Aluminum
- Durable & Easy to Clean

Part No.	L x W x H	Price
Single Door		
○ HRP6500-WHT	22.5" x 5.0" x 46.0"	\$357.25
○ HRP6502-WHT	22.5" x 7.0" x 46.0"	\$357.25
○ HRP6501-WHT	22.5" x 5.0" x 58.0"	\$413.95
○ HRP6503-WHT	22.5" x 7.0" x 58.0"	\$413.95
○ HRP6505-WHT	30.0" x 7.0" x 58.0"	\$459.30
○ HRP6506-WHT	30.0" x 9.0" x 58.0"	\$519.40
Double Door		
○ HRP6512-WHT	54.0" x 12.0" x 48.0"	\$1,247.40



GEAR CASE CABINET SHELF INSERTS

Made to Fit In Conjunction with Single Door Cabinets Above
- .080" Aluminum

Part No.	Description	L x W x H	Price
22.5" Wall Cabinet Inserts			
● HRP6520-SHORT	Short - Holds up to 18 Cases	20.00" x 5.50" x 32.00"	\$340.20
● HRP6520-TALL	Tall - Holds up to 30 Cases	20.00" x 5.50" x 55.50"	\$396.95
30.0" Wall Cabinet Inserts			
● HRP6519-SHORT	Short - Holds up to 24 Cases	25.25" x 5.50" x 32.00"	\$340.20
● HRP6519-TALL	Tall - Holds up to 42 Cases	25.25" x 5.50" x 55.50"	\$413.95



FOLDING WORK BENCH

48"

- Black Anodized Aluminum
- Use Inside or Outside of Trailer
- Folds Down When Not in Use

● **HRP6190** \$510.30



REPLACEMENT CABINET LATCHES

Part No.	Grip Range	Price
HRP6820	.910" - 1.81"	\$19.30
HRP6821	.040" - 0.85"	\$21.55



THE ULTIMATE SOLUTION FOR SHOP STORAGE

SPRINT CAR ASSEMBLY & TEAR DOWN CART

Shown with Both HRP6139 & HRP6139-100
- Parts & Bins are NOT Included

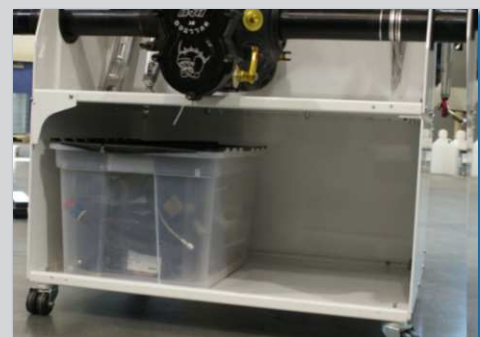
Part No.	Description	Price
○ HRP6139	Lower Main Unit	\$691.75
○ HRP6139-100	Add-On Top	\$328.90



ORGANIZE & STORE ALL BOLT-ON COMPONENTS FROM YOUR CAR

Customize with the Available Options to Suit Your Needs

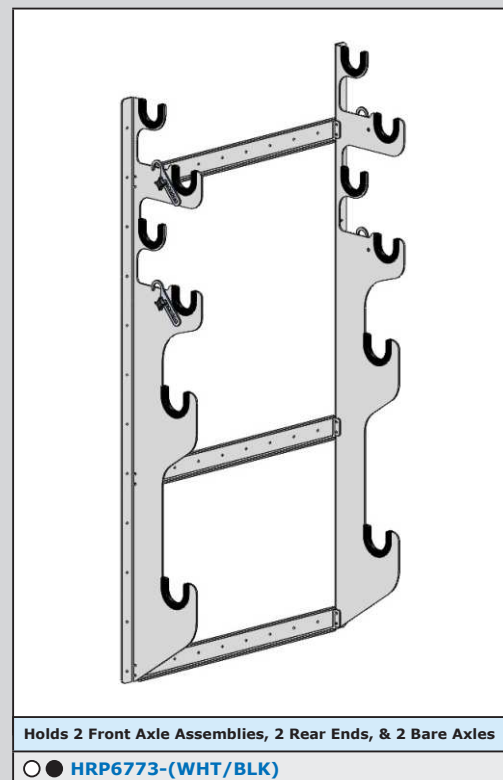
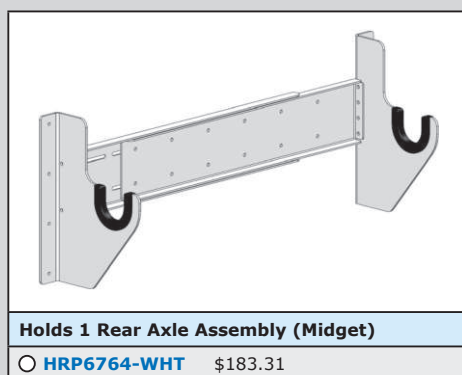
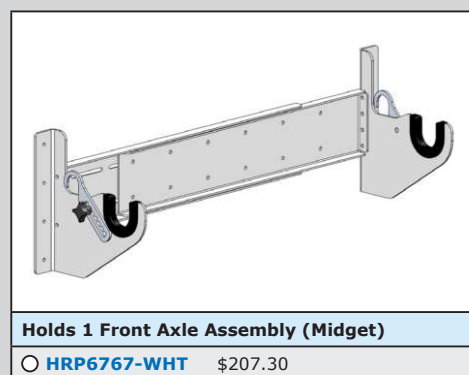
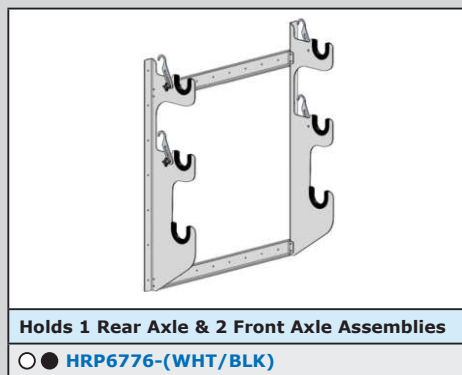
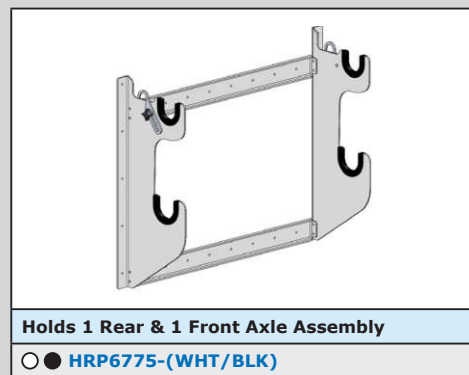
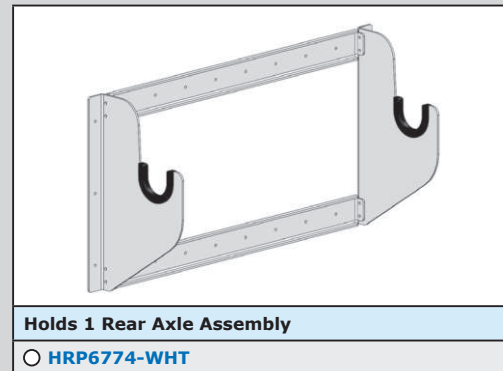
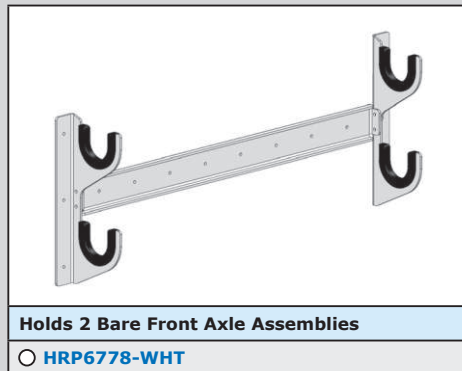
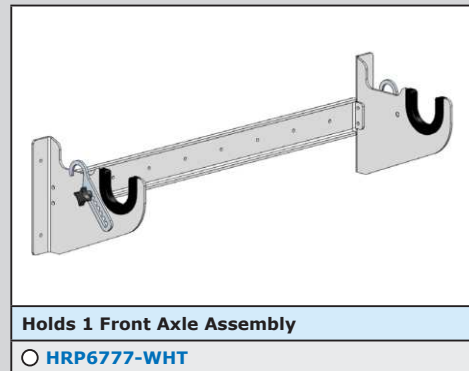
- Nurf Bars
- Front & Rear Bumpers
- Radiators
- Driveline Components
- Radius Rods
- Steering Gears
- Torsion Arms & Stops
- Bird Cages
- Jacobs Ladders
- Complete Rear Ends & Front Axles
- Bulk Storage for Large Items & Totes
- Storage Shelves for Smaller Items like Fuel & Steering Pumps



SPRINT CAR SINGLE & MULTIPLE COMBINATION AXLE RACKS

All HRP Axle Racks Utilize Our Exclusive Rubber "U" Channels for Maximum Support and Protection

- Midget Axle Racks have an Adjustable Width
- Aluminum

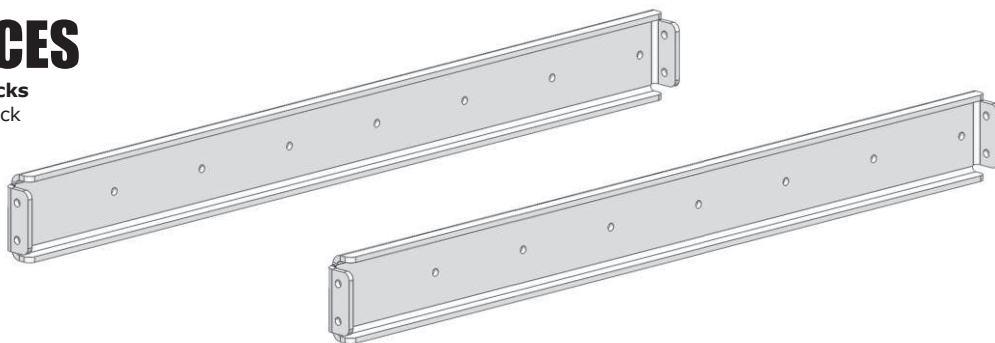


AXLE RACK CROSS PIECES

Extra/Replacement Pieces for your HRP Axle Racks

- Find the Length that Matches your Particular Axle Rack

Part No.	Description	Price
<input type="radio"/> HRP6769-WHT	29.75" Wide	\$35.90
<input type="radio"/> HRP6770-WHT	31.25" Wide	\$35.90
<input type="radio"/> HRP6779-WHT	33.75" Wide	\$35.90
<input type="radio"/> HRP6768-WHT	Adjustable	\$55.05



DRIVELINE RACK

Torque Tube & Ball Housing Assemblies

- Serrated Bottom to Hold Everything in Place
- HRP Exclusive Rubber "U" Channels

Part No.	Price
○ HRP6330-WHT	\$167.85
● HRP6330-BLK	\$175.80



NURF & BUMPER RACK

Store & Secure Nurfs & Bumpers

- HRP Exclusive Rubber "U" Channels

Part No.	Price
○ HRP6135-WHT	\$136.10
● HRP6135-BLK	\$147.45



ADJUSTABLE RADIATOR MOUNT

- Height Adjusts up to 29.00" Tall
- Width Adjusts up to 2.25" - 3.50"

Part No.	Price
○ HRP6340A-WHT	\$115.80
● HRP6340A-BLK	\$130.10



WALL MOUNT FUEL STICK HOLDER

Part No.	Price
○ HRP6265-WHT	\$45.40
● HRP6265-BLK	\$54.45



WALL MOUNT WHEEL COVER RACK

Part No.	Price
Sprint Car	
○ HRP6198-A-WHT	\$72.00
● HRP6198-A-BLK	\$76.00
Midget	
○ HRP6198-B-WHT	\$75.00



TIRE TAPE RACK

Holds up to 3 Tire Tape Measures

● [HRP6160](#) \$7.70

TIRE TAPE

Fits Tire Tape Rack

[HRP6823](#) \$5.70



WALL MOUNT TORSION BAR RACKS

PRO TIP: Sprint Car Torsion Bar Racks Also
Work Great for Stock Car Sway Bars

Part No.	Description	Price
Sprint Car		
○ HRP6350-WHT	Single Row (12 Places)	\$156.60
● HRP6350-BLK	Single Row (12 Places)	\$165.40
○ HRP6348-WHT	Double Row (24 Places)	\$222.30
Midget & Lightning		
○ HRP6351-WHT	Single Row (12 Places)	\$156.50
● HRP6351-BLK	Single Row (12 Places)	\$200.10



STEERING GEAR RACKS

Part No.	Description	Price
○ HRP6780-1-WHT	Standard (Full Gear)	\$190.55
○ HRP6780-3-WHT	Gen 2 Gear	\$134.45
● HRP6780-3-BLK	Gen 2 Gear	\$153.10
○ HRP6780-4-WHT	GME Nields Power Steering	\$190.55



ADJUSTABLE FUEL TANK WALL MOUNT BRACKETS

Fits All Popular Styles of Sprint Car Tail Tanks, Including ATL
- Reverse the Side Plates to Fit Midget & Lightning Sprints Tanks
- Lower Plate Protects the Wall & the Bottom of the Fuel Cell

Part No.	Price
○ HRP6340A-WHT	\$115.80
● HRP6340A-BLK	\$130.10



GEAR CHANGE OIL PANS

Take the Slop & Fuss Out of Changing Gears

- Keeps Gear Oil Flowing Below
- Separates Gears & Fasteners Above
- Aluminum

Part No.	Price
○ HRP6220-WHT	\$64.65
● HRP6220-BLK	\$64.65
● HRP6220	\$56.70



GEAR CASE/TOTE SHELVES

Keep Quick Change Gears Clean & Organized

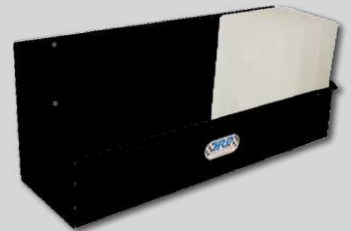
- Shelves Made to Fit Gear Cases/Totes

Part No.	Price
○ HRP6518-WHT	\$44.00
● HRP6518-BLK	\$56.20

GEAR CASES/TOTES

Fits Gear Case/Tote Shelves

Part No.	Price
○ ALL14350	\$6.99
● ALL14351	\$6.99



WALL MOUNT GEAR PANELS

Includes Clips to Hold Gears In Place

Part No.	Spots	Price
○ HRP6515-36	36	\$459.30
○ HRP6515-18	18	\$323.20
○ HRP6515-12	12	\$294.85

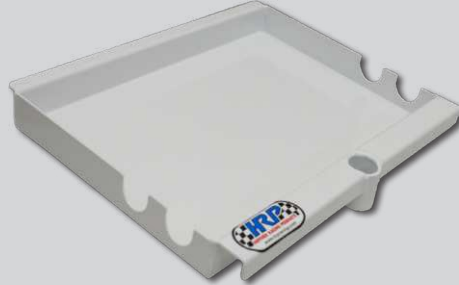


TORSION BAR WORK TRAY

It's Never Been Easier to do Torsion Bar Maintenance or Changes!

- Tray Mounts to the Front or Rear Bumper
- Fits 2 Bars, Tools, Grease, & More All at Once!
- Aluminum

○ HRP6384-WHT \$77.15



SPRINT CAR NOSE WING TRAY

An HRP Favorite & Classic

- Easily Clips into Place
- Tucks Away Nicely for Storage

Part No.	Price
○ HRP6009-WHT	\$112.90
● HRP6009-BLK	\$112.90



HERO CARD TRAYS

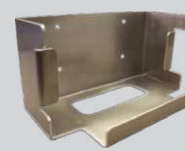
It's a Breeze to be a Fan Favorite with These!

- Mounting Hook Fits Both Card Tray Sizes

Part No.	Description	Price
Card Trays		
● HRP6145B	Fits 5" x 7" Cards	\$22.70
● HRP6145B-8X10	Fits 8" x 10" Cards	\$22.70
Mounting Hooks		
● HRP6145B-RB	Rear Bumper Hook - Sprint, Midget, Etc.	\$14.75
● HRP6145B-HK	Rear Spoiler Hook - Late Model, Modified, Etc.	\$14.75
Trailer Mount Racks		
● HRP6145B-WH	Fits 5" x 7" Card Tray & Either Style Hook	\$26.70
● HRP6145B-8X10	Fits 8" x 10" Card Tray & Either Style Hook	\$25.95



Hero Card Tray



Mounting Hook



Trailer Mount Rack

CORDLESS IMPACT SOCKET HOLDER

- Adjustable Height to Fit a Variety of Impacts
- Protective Rubber Cradles
- Impact & Socket Not Included

Part No.	Description	Price
○ HRP6375-WHT	Cordless Impact Socket Holder	\$120.00
● HRP6376	Sprint Car Impact Socket	\$288.00



WHEEL WRENCH RACK

Holds Most Popular Sizes of Wrenches

- Seen with Optional Spacer Tray **HRP6181-(WHT/BLK)** (Sold Separately)
- Protective Rubber Cradles

Part No.	Price
○ HRP6356-WHT	\$116.30
● HRP6356-BLK	\$127.65



WHEEL WRENCHES

Part No.	Style	Description	Price
HRP6355	Sprint Car	1.800" Axle	\$259.00
HRP6357-31	Midget	1.188" Axle	\$231.00
HRP6357-31	Midget	1.625" Axle	\$75.00



WALL MOUNT STYLE

WHEEL SPACER TRAY

23" Long

- Mount to Trailer/Shop Wall or Add to HRP's Wheel Wrench Rack
- Aluminum

Part No.	Price
○ HRP6181-WHT	\$52.80
● HRP6181-BLK	\$59.60



DRAWER STYLE

WHEEL SPACER TRAY

30" Long

- Cut Tray to Any Length Under 30"
- Aluminum

○ **HRP6180-WHT** \$38.05



BEAD BREAKERS

Part No.	Description	Price
○ HRP6018	HRP Deluxe 10"	\$59.00
○ HRP6021	HRP Midget Deluxe 13"	\$59.00
● HRP6020	HRP Sprint Deluxe 15"	\$59.00
○ HRP6023	J&J 15"	\$187.15



HRP: Zinc Plated with Retention Ball



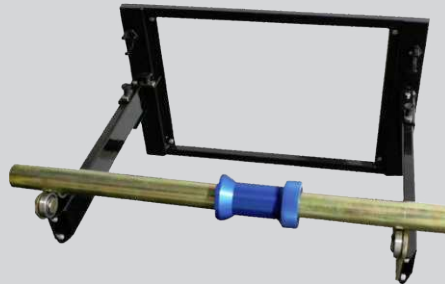
J&J: Aluminum

WHEEL BALANCER

- Works GREAT for Tire Siping!
- Mounts to Trailer Wall or Floor
- Anodized Components
- Includes Rubber Cradles for Storage Support
- Wheel Mandrel Includes Shaft & Nut

*Balancer & Mandrel Sold Separately

Part No.	Description	Price
Sprint Car		
● HRP6014-1	Wheel Balancer	\$695.00
● HRP6014-600	Wheel Mandrel	\$816.50
Midget		
● HRP6014-1-M	Wheel Balancer	\$306.20
● HRP6014-700	Wheel Mandrel	\$408.25



TIRE RACK

Adjustable From 12" Dia. to 40" Dia.

- Holds Most Styles of Racing Tires/Wheels: Sprint Car, Lightning, Midget, Late Model, Modified, Road Race, Stock Car, Drag Race, Etc.
- Folds Up & Locks in Closed Position
- 28.12" Tall

Part No.	Length	Price
● HRP6600-48	48.0" (51.5" Overall)	\$430.95
● HRP6600-545	54.5" (58.0" Overall)	\$680.40
● HRP6600-64	64.0" (67.5" Overall)	\$521.65
● HRP6600-755	75.5" (79.0" Overall)	\$839.20
● HRP6600-96	96.0" (99.5" Overall)	\$765.45
● HRP6600-C	Custom Length	Call



SMALL/KART TIRE RACKS

- White Powder Coated Aluminum End & Center Plates
- Center Plates on 80" Models Only
- Stainless Steel Support Rods

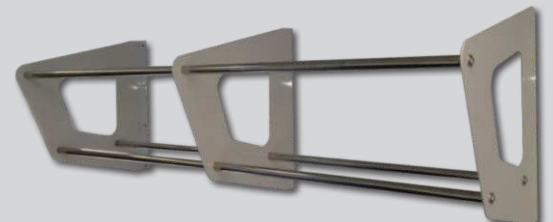
Small Tire Rack: Micro Sprints, Junior Sprints, ATV/UTV

- Holds Up to 24" Circumference Wheels
- 20"+ Tall Mounting Plates

Kart Tire Rack: 5" & 6" Wheels, Winged Outlaws, Quarter Midgets

- End/Center Plate Dimensions: 12.013" x 13.067"

Length	Small Tire Rack	Kart Tire Rack
48"	○ HRP6336-48 \$235.90	○ HRP6341-48 \$152.00
64"	○ HRP6336-64 \$247.25	○ HRP6341-64 \$173.55
80"	○ HRP6336-80 \$300.55	○ HRP6341-80 \$205.30

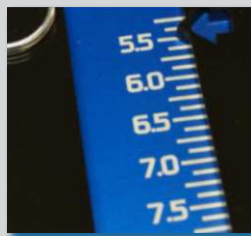


THE QUICKEST & EASIEST SQUARING SYSTEM EVER

SPRINT CAR SQUARING BLOCKS SET

These EZ Square Tools have Adjustable Blocks, which Quickly & Securely Mount to your Car & Cradle the Axle, Making it a Breeze to Set Height & Square - 5.25" - 8.25" Adjustability

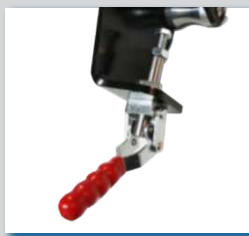
HRP6011 \$345.90



Adjustability
5.25" - 8.25"



Roller
Bearings



Clamps Securely
onto Frame



SQUARE BLOCK ARM SET

HRP's (Optional Add-On) Adjustable Rule Arms Gives you Precise & Quick Setups All the Time!

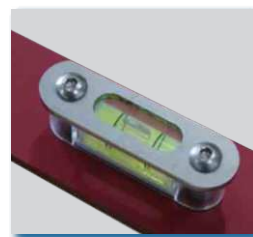
- .5" Increments to 39," 40," & 41" in Length

- Sold as a Pair

HRP6011-ARM-SET \$82.65



Adjustability



Built In Level

MOOSE BLOCKS

Market Price

Part No.	Description
HRP6253	Tall Setup
HRP6251	Short Setup
HRP6254	Cradle Tops Set
HRP6249	Roller Top



MOOSE BLOCKS HOLDER

Wall Mount

- Holds up to 4 Moose Blocks

HRP6142A \$30.10



TIRE GROOVERS

The **HRP6014-1** Wheel Balancer Works Great for Tire Siping & Grooving: See on Page #21

VAN ALSTINE "ALL IN ONE" GROOVER

- Built-in Temperature Controls
- Cuts up from .5"
- Requires "All-In-One" Blades
- Blades are Included



ALL10770 \$418.99

IDEAL HEATED KNIFE GROOVER

- 250 Watts/110 Volts
- Adjustable Blade
- Control the Depth of the Cut



ALL-IHK125 \$95.00

TIRE GROOVER BLADES

Qty.	Round: #2-2/32	Round: #3-3/32	Round: #4-8/32	Round: #4-4/32	Flat: #6-4/32	Flat: #6-6/32	Price
Single	ALL10268	ALL10269	ALL10274	ALL10276	ALL10272	ALL10273	\$1.15
12 Pack	ALL10268-12	ALL10269-12	ALL10274-12	ALL10276-12	ALL10272-12	ALL10273-12	\$14.99



6 BLADE TIRE SIPER

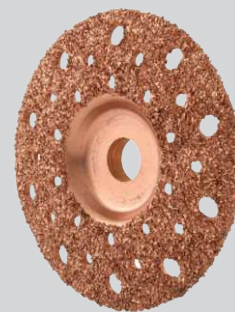
- Adjustable Depth
- Uses Standard Size Blades
- Black Anodized Aluminum
- Etched HRP Logo



● **HRP6201** \$113.40

GRINDING DISK

- Grind Off the Hardened Outer Skin off your Dirt Track Tires**
- Create Round, Aggressive Sipes
 - 4", 23 Grit, 5/8" Arbor



ALL44180 \$43.99

HAND REAMER FOR KING PINS/AXLES

- .859"**
- Includes a Protective Case

HRP6107 \$194.25



5/8-18 FINE THREAD TAPS

Part No.	Description	Price
ALL11066	Right Hand	\$14.99
ALL11067	Left Hand	\$14.99



CABINET/WALL MOUNT RADIUS ROD RACKS

Build Your Radius Rod Rack: Finish with 2 Different Part Numbers

1) Select Desired Width			
15" Wide		20" Wide	
<div><div></div><div></div></div>			
2) Select a Corresponding Upper Tray with Desired Amount of Rows/Spots			
Single Row (6 Rods)	Double Row (12 Rods)	Single Row (8 Rods)	Double Row (16 Rods)
○● HRP6523S-15-(WHT/BLK) \$88.20	○● HRP6521D-15-(WHT/BLK) \$104.74	○● HRP6523S-20-(WHT/BLK) \$99.25	○● HRP6521D-20-(WHT/BLK) \$123.50
<div><div></div><div></div><div></div><div></div></div>			
3) Select a Corresponding Lower Tray that Fits the Desired Diameter Rods			
1.125" Dia. Rods: ○● HRP6523S-15B-(WHT/BLK) \$40.30	1.125" Dia. Rods: ○● HRP6521D-15B-(WHT/BLK) \$40.30	1.125" Dia. Rods: ○● HRP6523S-20A-(WHT/BLK) \$42.50	1.125" Dia. Rods: ○● HRP6521D-20A-(WHT/BLK) \$42.50
1.250" Dia. Rods: ○● HRP6523S-15C-(WHT/BLK) \$40.30	1.250" Dia. Rods: ○● HRP6521D-15C-(WHT/BLK) \$40.30	1.250" Dia. Rods: ○● HRP6523S-20D-(WHT/BLK) \$42.50	1.250" Dia. Rods: ○● HRP6521D-20D-(WHT/BLK) \$42.50
N/A	1" Dia. Rods: ○● HRP6521D-15A-(WHT/BLK) \$40.30	1" & 1.250" Dia. Rods: ○● HRP6523S-20B-(WHT/BLK) \$42.50	1" & 1.250" Dia. Rods: ○● HRP6521D-20B-(WHT/BLK) \$42.50
N/A	N/A	1.125" & 1.250" Dia. Rods: ○● HRP6523S-20C-(WHT/BLK) \$42.50	1.125" & 1.250" Dia. Rods: ○● HRP6521D-20C-(WHT/BLK) \$42.50



15" EXAMPLE:

- 1) 15" Wide
↓
2) Double Row (12 Rods):
HRP6521D-15-(WHT/BLK) x1
↓
3) 1.125" Dia. Rods:
HRP6521D-15B-(WHT/BLK) x1

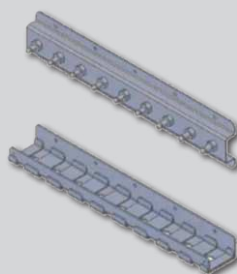


20" EXAMPLE:

- 1) 20" Wide
↓
2) Single Row (8 Rods):
HRP6523S-20-(WHT/BLK) x1
↓
3) 1.125" & 1.250" Dia. Rods:
HRP6523S-20C-(WHT/BLK) x1

MICRO SPRINT
RADIUS ROD RACK

- Single Row (9 Positions)
- 20" Wide
- Upper & Lower Tray Included
- Includes (3) 0.437" & (6) 0.375" Dia. Pins



● HRP6540-C \$136.10

RADIUS ROD RACK
MEASURING BOSS











Quickly Adjust & Match the Replacement
- Knurled Edges for Superior Grip

HRP6208 \$62.40



CABINET/WALL MOUNT SHOCK RACKS

Build Your Shock Rack: Finish with 2 of the Same Part Numbers (Sold Each: 2 Racks = 1 Complete Set)

1) Select Desired Width			
15" Wide		20" Wide	
			
2) Select a Corresponding Upper Tray with Desired Amount of Rows/Spots			
Single Row (6 Rods)	Double Row (12 Rods)	Single Row (8 Rods)	Double Row (16 Rods)
  HRP6524S-15-(WHT/BLK) \$88.20	  HRP6522D-15-(WHT/BLK) \$88.20	  HRP6524S-20-(WHT/BLK) \$99.20	  HRP6522D-20-(WHT/BLK) \$126.80



15" EXAMPLE:

- 1) 15" Wide
- 2) Double Row (12 Rods):
HRP6522D-15-(WHT/BLK) x2



20" EXAMPLE:

- 1) 20" Wide
- 2) Single Row (8 Rods):
HRP6524S-20-(WHT/BLK) x2

SPARE STUDS

Sold Each

See Rue Ring Clips on Page #44

Radius Rod Rack Studs				
Double HRP6525	Single HRP6527	Single HRP6533	Single HRP6534	Single HRP6535

Radius Rod Rack Stud	Shock Rack Stud	Shock Rack Stud	Gear Pin Boss	Steering Rod Pin
Single HRP6536	Double HRP6526	Single HRP6528	HRP6537	HRP6538

CHEVY SPRINT CAR ENGINE CART

Support Worthy of Any Engine

- Solid Frame
- Heavy Duty Casters
- Ships UPS Ground
- Easy Assembly

● **HRP6002-600** \$272.20

OPTIONS

Part No.	Description	Information	Price
● HRP6004	Adapter Plate for Small Block	Use with HRP6002	\$30.10
● HRP6002	Engine Stand 1" Dia. Plated Tubing	Use with HRP6004	\$83.95
● HRP6003	Engine Cart Stand Base - 24" x 21"	Includes Casters	\$90.20



HRP6004



HRP6002



HRP6003



CHEVY ENGINE LIFT PLATE

● **HRP6001** \$25.55



HEADER MOUNTS

Engine Style	Angled Design	Flat Design
Chevy Spread Port	○ ● HRP6700A-(WHT/BLK) \$38.05	○ ● HRP6700F-(WHT/BLK) \$33.50
Chevy Standard Port	○ ● HRP6701A-(WHT/BLK) \$38.05	○ ● HRP6701F-(WHT/BLK) \$33.50
Chevy Big Block	○ ● HRP6705A-(WHT/BLK) \$41.45	○ ● HRP6705F-(WHT/BLK) \$41.45
Dodge	○ ● HRP6706A-(WHT/BLK) \$41.45	○ ● HRP6706F-(WHT/BLK) \$41.45
Ford	○ ● HRP6707A-(WHT/BLK) \$41.45	○ ● HRP6707F-(WHT/BLK) \$41.45



ENGINE ASSY STAND

HRP's Heavy Duty, Robust Design Features:

- An Adjustable Bracket to Locate to Almost Any Engine Block
- A Quick Set Brake System for Locking Engine Rotation
- An Oil Drain Pan
- Heavy Duty Casters
- Blue Powder Coating
- Breaks Down for Shipping

● **HRP6029** \$1,595.00



NEW PRODUCT

REAR END WRENCH

Removes Rear End Gear Lube Fill Plug

- Mild Steel
- Fits Old Style Winters

● **HRP6105** \$24.95



CAR CARTS

Sprint Cars, Midgets, Lightning, Micro Sprints, Junior Sprints, Etc.

- Easily Move and Raise Your Car to a Workable Height
- Car Cart Riser Kit Available Separately for Raised Rail Chassis
- Sold in Pairs

Part No.	Description	Price
● HRP6210	Car Carts	\$368.80
● HRP6210-200	Riser Kit	\$26.70



TOP WING WALL TRAYS

Fits Full Size, Lightning, & Micro Sprints

- Adjusts Up to 74" Long
- .090 5052 Aluminum
- Works with All Popular Wing Sizes

Part No.	Price
○ HRP6550-WHT	\$96.40
● HRP6550-BLK	\$113.40



TOP WING ROOF MOUNT PANEL

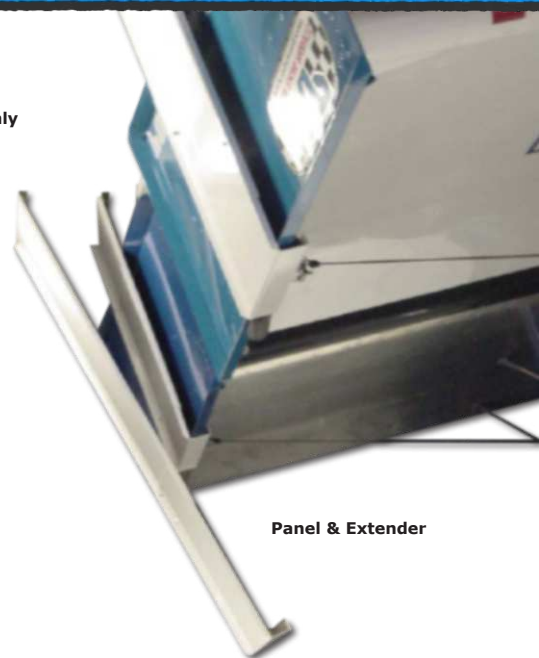
Mounts ONE Sprint Car Top Wing

- See Options Below for Mounting Additional Wings

Part No.	Price
○ HRP6551-WHT	\$119.10
● HRP6551-BLK	\$140.65



Panel Only



Panel & Extender

TOP WING ROOF MOUNT EXTENDER/SET

The "Roof Mount Panel Only" Above Hangs 1 Spring Car Top Wing. To [Mount Additional Wings](#), Purchase the "Extension Only" Below to Extend an Existing Roof Mount Panel **or** Purchase the "Mount & Extender Set" for Both!

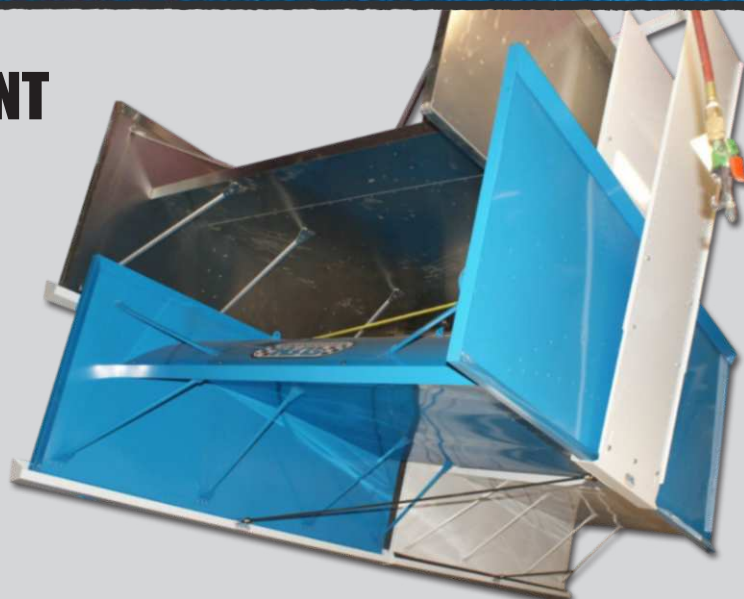
Part No.	Description	Price
○ HRP6554-WHT	Extender ONLY	\$68.05
○ HRP6555-WHT	Mount & Extender Set	\$141.75

ADJUSTABLE TOP WING ROOF MOUNT

Our Newest Design in Spring Car Top Wing Hangers

- Fully Adjustable & Adapts to Securely Fit Any Top Wing
- Mounts Additional Wings

○ [HRP6557-WHT](#) \$158.80

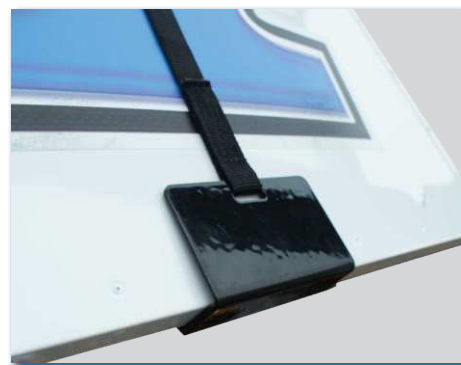


TOP WING CINCH STRAP HOOK KIT

We Recommend the Use of 2 Straps Per Top Wing

- 80" Full Extended Length
- Mounts to Trailer Ceiling
- Sold Each
- Possible to Hang Multiple Wings (Double Stacked)

● **HRP6772** \$78.85



NOSE WING WALL MOUNTS

Each Mount Includes (2) 15" Bungees

Part No.	Description	Price
Adjustable Mount		
○ HRP6556-WHT	Fits Any Sprint Car Nose Wing	\$141.75
● HRP6556-BLK	Fits Any Sprint Car Nose Wing	\$156.50
Standard Mount		
○ HRP6553-WHT	Fits Full Size Sprint - 24" x 26"	\$85.05
● HRP6553-BLK	Fits Full Size Sprint - 24" x 26"	\$96.40
○ HRP6549-WHT	Fits Lightning Sprint - 18" x 30"	\$82.25

15" NOSE WING MOUNT BUNGEE

Replacement/Spare Nose Wing Mount Bungee

HRP6548 \$6.85

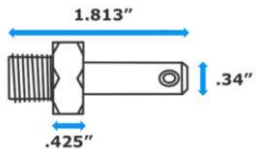


WALL MOUNT WICKER BILL RACK

See Rue Ring Clips on Page #44

○ **HRP6790-WHT** \$107.75



Wicker Bill Rack Stud - Single	
	
HRP2136V	\$10.50



STREETER SUPER STANDS

LIFTS & STANDS

KARTS, QUARTER MIDGETS, WINGED OUTLAWS

STREETER BIG FOOT MODELS

All Streeter Big Foot Models Feature:

- Pneumatic Wheels & Casters
- Precision Laser Cut Tubing & Fixture Welding
- A Convenient Folding Tray
- Easy Storage (Folds Up)

Part No.	Style	Height	Tubing	Material	Price
● STR-2000-500-BLK	"Standard" Big Foot	34"	1.00"	16 Gauge Steel	\$327.20
● STR-2000-500-RED	"Standard" Big Foot	34"	1.00"	16 Gauge Steel	\$327.20
● STR-2000-500-BLU	"Standard" Big Foot	34"	1.00"	16 Gauge Steel	\$327.20
● STR-2500-500-BLK	"Fatty" Big Foot	34"	1.25"	14 Gauge Steel	\$340.05
● STR-2600-500-BLK	"Shorty" Big Foot	28"	1.00"	16 Gauge Steel	\$320.80



"STANDARD" BIG FOOT

Junior Drivers, Quarter Midgets, Winged Outlaws, Etc.

"FATTY" BIG FOOT

Heavier Karts: Shifters, TaG, Winged Outlaws, Etc.

"SHORTY" BIG FOOT

Junior Drivers, Quarter Midgets, Winged Outlaws, Etc.



STREETER BIG FOOT ADD-ONS/ACCESSORIES

KART STOPS

Prevent Chassis Slips & Falls

- Compatible with Any Big Foot Model
- Easy Installation & Uninstallation
- 4 Kart Stops Per Pack = 1 Stand

● **STR-9000-506** \$27.05



STREETER TRAY PIN/CLIP

Spare/Replacement Pin for Big Foot & Roller Stand Fold-Up Trays
- Keeps Tray in Raised Position

● **HRP5914** \$1.20



STREETER SUPER LIFT

Kart Racers, Quarter Midgets, Champ Karts, & Winged Outlaws

- Adjustable Anodized Lift Hooks
- Adaptable to Any Rear Bumper Style
- 1.25" Tubing
- 14 Gauge Steel
- Ships UPS Ground

Part No.	Price
● STR-2800-500-BLK	\$930.25
● STR-2800-500-RED	\$930.25
● STR-2800-500-BLU	\$930.25



BELT DRIVE SYSTEM

Safer & More Efficient Than a Cable Drive System

NO EXPOSED WIRES

All Wiring Runs Inside the Push Handle Tube, Creating a Safer Lift & a More Visually Pleasing Appearance

YOU'RE COVERED

Our Exclusive Battery Cover Protects Terminals from Dropped Tools or Parts

SUPER LIFT LATCH KIT

Easily Lock & Release the Lift in the Raised Position. Factory Provided with All Super Lifts 2019 & Newer. Pre-2019 Super Lift Latch Kits are Available at hrpracing.com



SUPER LIFT UPPER TRAY

Attaches to Control Handle

- Holds Your Tools and Parts While Working on Your Kart
- Features a Handy Drink Holder: A Nice Addition for a Pre & Post Race Beverage

● **STR-2800-511** \$96.30

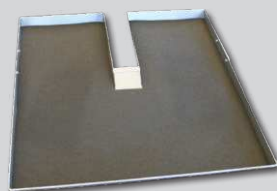


SUPER LIFT LOWER TRAY

Attaches to Frame

- Includes a Protective Rubber Mat
- Perfect for Holding Starters, Tools, & Parts

● **STR-2800-506** \$96.30



SUPER LIFT AIR TANK HOLDER

Attaches to the Base of the Frame & the Battery Mount

- Fits Most Air Tanks Up to 5 Gallons
- Silver Arms of the Lift Must Clear the Tank

● **STR-2800-509** \$74.50



SUPER LIFT AIR TANK

The Perfect Size for Our Super Lifts

- 5 Gallon Air Tank
- Includes a Gauge, a Standard Tire Valve Air Chuck & Hose

STR-2800-510 \$64.20



SUPER LIFT REPLACEMENT COMPONENTS

Part No.	Description	Price
STR-2800-514	2" Wide Nylon Belt	\$35.00
STR00320	Bulldog Winch 2000	\$116.70
STR00244T	Lift Stand Hook	\$46.35
STR00321	Control Switch	\$57.80



CIK/SPRINT STYLE STREETER STACKERS

Display, Store, & Transport Multiple Karts at Once

- 1.25" Tubing
- 14 Gauge Steel
- Laser Cut Gussets & Cinch Strap Holes
- Stainless Steel Pins for Easy Assembly & Disassembly
- 8" Pneumatic Casters
- Ships UPS Ground

Part No.	Price
Double Stacker	
● STR-2400-500-BLK	\$423.45
● STR-2400-500-RED	\$423.45
● STR-2400-500-BLU	\$423.45
Triple Stacker	
● STR-2400-530-BLK	\$538.95
● STR-2400-530-RED	\$538.95
● STR-2400-530-BLU	\$538.95



DOUBLE WIDE STACKER

Oval Karts/Full Bodied Karts

- Over 44" of Inside Clearance (50" Overall)
- Fits Within Most Full Size Pickup Truck Beds & Cargo Trailers

● **STR-2900-500-BLK** \$415.80



STACKER INSERTS

Transform your Existing Double Stacker Into a Triple Stacker!

- 1 Stacker Pin Kit is Needed for Installation (Sold Separately)

Part No.	Style	Price
● STR-2400-503-BLK	CIK/Sprint	\$186.10
● STR-2900-503	Oval/Full Bodied	\$170.00

STACKER PIN PACK

Includes 4 Pins

- Stainless Steel

STR-2400-509 \$46.70



UPRIGHTS

Display & Store your Karts Upright to Save Space

- Exclusive Laser Cut Gussets with Cinch Strap Hook Holes
- A Rubber Support Mat & Bracket, Securing the Axle
- 3" Poly Casters, Making it Easy to Maneuver

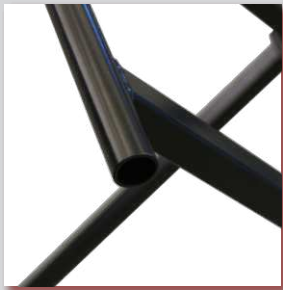
Part No.	Style	Price
● STR-1800-500-BLK	Full Size Kart	\$173.25
● STR-300-500-BLK	Kid Size Kart	\$184.90



REGULAR NON ROLLING KART STAND

For Any Kind of Racing

● **STR-2100-500-BLK** \$120.70



MULTI LEVEL STACKER TABLE TOP

Utilize Your Stacker as a Workbench, Display, or Serving Area

- .100 Aluminum
- Durable & Easily Cleaned
- Multiple Levels of Storage & Surface
- Easy Installation & Uninstallation

Part No.	Description	Price
○ STR-2400-540	Fits Stackers 45.75" Long: 2020-Newer	\$160.40
○ STR-2400-540-A	Fits Stackers 47" Long: 2010-2018	\$99.95



WALL MOUNT ENGINE RACKS

Adjusts to Common Karting Style Mounts

- Holds 2 & 4 Cycle Engines
- Powder Coated Endplates & Stainless Steel Rods

Part No.	Description	Price
<input type="radio"/> HRP6343-1	1 Place	\$93.00
<input type="radio"/> HRP6343-3	3 Places	\$139.50

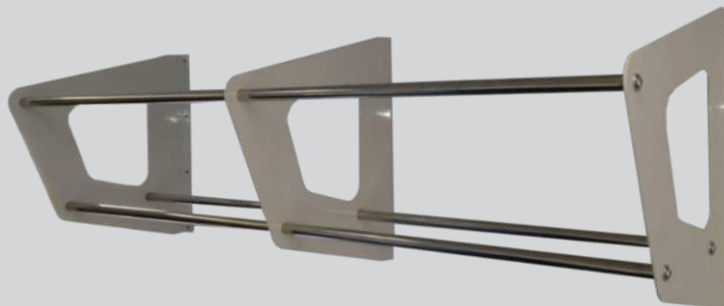


KART TIRE RACKS

Karts (5" & 6" Wheels), Winged Outlaws, Quarter Midgets

- End/Center Plate Dimensions: 12.013" x 13.067"
- White Powder Coated Aluminum End & Center Plates
- Center Plates on 80" Model Only
- Stainless Steel Support Rods

Part No.	Length	Price
<input type="radio"/> HRP6341-48	48"	\$152.00
<input type="radio"/> HRP6341-64	64"	\$173.55
<input type="radio"/> HRP6341-80	80"	\$205.30



WALL MOUNT AXLE RACKS

All U.S. & Metric Sizes up to 50mm

Part No.	Description	Price
<input checked="" type="radio"/> HRP6353	Single Row (6 Positions)	\$160.25
<input checked="" type="radio"/> HRP6353-D	Double Row (12 Positions)	\$242.70



REPLACEMENT WHEELS



Part No.	Description	Use On	Price
HA00081	10" Wheel/Tire	Big Foot/Super Lift	\$29.25
HA00082	8" Swivel Caster	Big Foot/Super Lift/Stackers	\$29.25
HA00086	8" Rigid Caster	Stacker	\$29.25

Part No.	Description	Use On	Price
HA00086-NF	8" Rigid Caster - Flat Free	Stacker	\$27.00
HA00087	3" Swivel Caster	Upright	\$5.00
-	-	-	-

BEAD BREAKER

5" & 6" Kart Racing Rims & Winged Outlaw Karts

- Fully Adjustable
- Anodized Components: Built to Last
- Powder Coated Base

● STR-1400-500 \$83.45

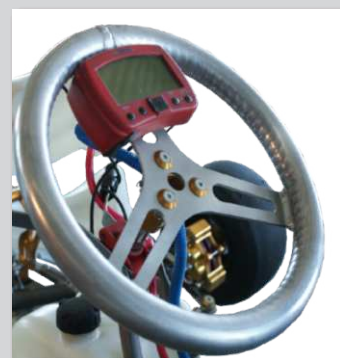


13" HRP STEERING WHEEL

Flat Style

- 1.25" Dia. Aluminum Tubing

● HRP8028F-125-13 \$72.50



MPI STEERING WHEELS

Part No.	Description	Price
● MPI-KD-14-A	Dirt Karting & Lightning Outlaws (13.75")	\$160.25
● MPI-KP-12-A	Karting/Quarter Midget/Lightning Outlaws (11.75")	\$242.70
● MPI-KQR-11-A	Quarter Midget (11") Round	\$150.00
● MPI-KQS-11-A	Quarter Midget (11") Square	\$229.00



**HRP T-SHIRT**

HRP9029-(S/M/L/XL) \$15.00
HRP9029-(XXL/XXXL) \$17.00

**HRP HOODIE**

HRP9039-(S/M/L/XL) \$35.00
HRP9039-(XXL/XXXL) \$38.00

**GRAY SNAPBACK**

HRP9018-GRAY \$22.00

**CAMO SNAPBACK**

HRP9017-CAMO \$22.00

HRP BASEBALL CAPS

Part No.	Size	Price
● HRP9020	Non-Fitted Unisex	\$14.00
● HRP9021-Y	FlexFit Youth	\$24.00
● HRP9021-SM	FlexFit Small/Medium	\$24.00
● HRP9021-LXL	FlexFit Large/X-Large	\$24.00

**HRP DECALS**

Part No.	Size	Price
HRP9000	1.62"	\$1.00
HRP9001	2.88"	\$1.00
HRP9003	8.00"	\$2.50
HRP9006	20.00"	\$6.00

**STREETER DECALS**

Part No.	Size	Price
STR9002	1.000" x 2.125"	\$0.55
STR9004	2.625" x 4.375"	\$0.90
STR9007	4.625" x 7.125"	\$1.10

**HEAVY DUTY ALUMINUM HANGERS**

Your Race Gear Deserves to be Taken Care of
- Etched HRP Logo

Part No.	Price
● HRP6800-BLK	\$7.95
● HRP6800-BLU	\$7.95
● HRP6800-RED	\$7.95
● HRP6800-CLR	\$7.95
● HRP6800-VLT	\$7.95



HRP MULE CONVERSIONS

HRP Leads the Industry in Kawasaki Mule Conversions



**DESIGNED & BUILT
BY RACERS, FOR
RACERS**

Visit hrpracing.com for
More on HRP Mule
Conversions



THE OPTIONS ARE ENDLESS!

**CALL OR EMAIL TO GET YOUR
PERSONAL BUILD SHEET**

Email: hrpsales@ghilaser.com

Phone: (262) 457-5015



ISC RACERS TAPE 90'



Part No.	Price
● WPS-10-2300BK	\$12.50
● WPS-10-2300BL	\$12.50
● WPS-10-2300R	\$12.50
○ WPS-10-2300W	\$12.50
● WPS-10-2300Y	\$12.50



HEADER WRAP

1/16" x 2" x 50'

52-64870 \$65.00



SAFETY WIRE PLIERS

ALL10120 \$34.99



SAFETY WIRE SPOOL

0.32" Stainless Steel

ALL10121 \$16.99



VALVE STEM CORE REMOVER

WPS-85-4106 \$3.95



E-TRACK & RINGS

Part No.	Description	Price
E-Track		
WPS-29-3050	Pair of 36"	\$34.95
WPS-29-3051	Pair of 58"	\$49.95
Rings		
WPS-29-3053	O-Rings (4 Pack)	\$34.95
WPS-29-3052	D-Rings (4 Pack)	\$23.95

E-TRACK
FLOOR PLATE

WPS-29-3054 \$22.95

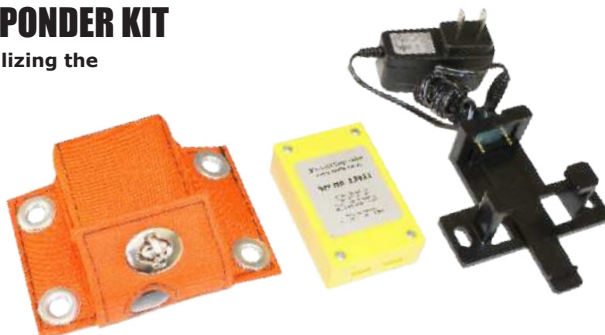


WESTHOLD WIRELESS TRANSPONDER KIT

Only Compatible with Tracks/Series Utilizing the Westhold Transponder System

- Includes Transponder, Charger, & Pouch

HRP8991 \$240.00

REPLACEMENT
POUCH

HRP8992 \$26.00

REPLACEMENT
CHARGER

HRP8993 \$40.00



RUE RING CLIPS

Part No.	Dia.	Price
HRP8409-250	0.250"	\$0.35
HRP8409-312	0.312"	\$0.35
HRP8409-375	0.375"	\$0.40
HRP8409-500	0.500"	\$0.45



6" MAGNETIC PARTS DISH

WPS-57-8485 \$9.99



SPRING HOOK TOOL

WPS-57-8549 \$8.99



RACING OPTICS TEAR OFFS

Part No.	Description	Price
ROP7204C	Simpson RX & Impact Champ	\$29.95
ROP7230C	Impact Vapor & Charger	\$29.95
ROP10209C	Simpson Shark, Super Shark, & Vudo	\$33.95



NITRO-BEE SYSTEM

Rugged Radios Race Receiver

RR-NITRO-BEE-UHF \$99.00



LONGACRE RACING PRODUCTS

We Proudly Carry the Latest in Scale Technology From Longacre, Along With Scale Pads, Cases, & Setup Equipment

- Tire Gauges, (Page #17), Tire Marking Pens & Sticks, Acculevel Camber, Scale Ramp Kits, & More
- Find your Perfect Setup Online at hrpracing.com

Part No.	Description	Price
52-50612	Mini Pyrometer IR 600 Degree	\$104.00
52-72537	Scale Ramp Kit 2.5" (4 Set)	\$512.00
52-50882	Tire Marking Pen	\$11.00
52-50880	Tire Marking Stick	\$9.00
52-78292	Acculevel 5/8" Caster/Camber	\$272.00



QUICK 2 MEASURING CUP

WPS-78-9830 \$6.95

**RATIO RITE MIXING CUP**

WPS-28-1111 \$6.95

**PRO BLEND MOTORSPORTS ANTI-SEIZE**

HRP8446 \$8.25

**LUCAS OIL PRODUCTS, INC.**

Part No.	Description	Price
WPS-58-5308	Brake Cleaner (14 oz)	\$4.75
WPS-58-5286	Fuel Stabilizer (1 qt)	\$11.50
WPS-58-5309	Contact Cleaner	\$9.50

**DISPOSABLE GLOVES**

Part No.	Description	Price
WPS-59-9211L	Large Gloves	Market
WPS-59-9211XL	X-Large Gloves	Market

**WILWOOD BRAKE FUEL**

Part No.	Description	Price
WIL290-0632	570 Dot 3 (12 oz)	\$9.99
WIL290-6209	EXP 600 Plus (16.5 oz)	\$18.79

**RED LINE**

Part No.	Description	Price
WPS-57-6502	2 Cycle Racing Oil	\$9.99
WPS-57-6510	Water Wetter	\$18.79

**K&N**

Part No.	Description	Price
KNE99-0516	Air Filter Oil Spray (12 oz)	\$6.99
KNE99-0606	Air Filter Cleaner Spray (12 oz)	\$6.99
KNE99-0551	Filter Oil (1 gal)	\$23.99
KNEHP-3002	Heavy Duty Chevy Oil Filter	\$11.99

**MUD-X**

Part No.	Description	Price
MX100	1 Quart	\$13.95
MX101	1 Gallon	\$36.95

**WABAM**

Part No.	Description	Price
HRP6192	Shop Towels (200CT)	\$12.99
W20101	Wet Wipes (75 CT)	\$11.99
W10101	WABAM Hand Soap (16 oz)	\$9.99
W40101	WABAM Glass (19 oz)	\$3.99
W50101	WABAM Blast (18 oz)	\$6.99
W30101	WABAM Shine (12 oz)	\$9.99



SUGGESTIONS ON INSTALLING YOUR TRAILER ACCESSORIES

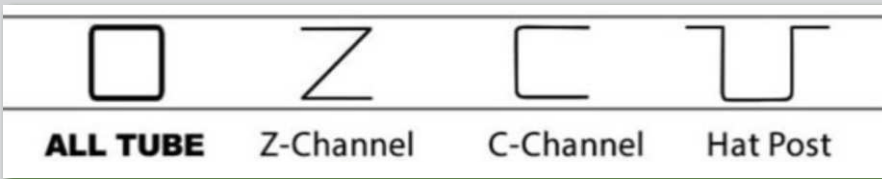
While installation and mounting methods are at the sole discretion of the purchaser, the following information is our suggested methods and techniques. Keep in mind that each trailer manufacturer will differ and one does not fit all. Research and inspection may be required.



TEK SCREW

We suggest using #10 or #12 Tek Screws with a Hex Head. Most applications will require 1" & up to 1.5" length screws.

Confirm the proper length for your installation.



These are the most commonly used styles of trailer wall studs. It is best to know what style you have prior to beginning an installation to choose the best hardware and backing, if needed.

Be aware of any electrical wiring, air lines, fuel lines, LP lines, or other obstructions within your trailer. Smaller items may only need to be affixed to a single wall stud while longer items and those of substantial weight will require multiple stud installation. Some items like tire racks, jug racks, overhead cabinets, and others that may not meet all stud locations will require the use of a backing plate or backing bars. Plywood walls will not suffice as the primary holding point for any accessory and doing so is at the risk of the installer. Check the fitting of your accessories after installation and following at least once a year to assure everything is in place and secure.

A more detailed information sheet can be found online at: <http://www.hrpracing.com/producttechsupport>





GOTTA ROLL WITH THE BEST TO BE THE BEST

hrpacing.com



CHECK OUT THESE ADDITIONAL CATALOGS

Available Online at hrpacing.com



MULE CONVERSIONS & ACCESSORIES

HRP Leads the Industry in Kawasaki Mule Conversions. All Mules are Custom Built from the Front Push Bumper to the Personalized Rear Name Plate. Conversions can be Outfitted With Many Options from Air Compressors to Generators & Many Different Racks to Organize your Tools & Spare Parts to Keep your Race Team Running Smooth.

SPRINT CAR RACING'S #1 SELLING WINGS & COMPONENTS

40+ Pages of HRP's Industry Leading Sprint Car Wings & Components. From Driveline to Body Components, Wing Trees to Bumpers, Front Axles to Torsion Bars. This Catalog has it all!

PRICES SUBJECT TO CHANGE